

Valve Information

Valve selection chart

Order No.	Page No.	*Cylinder Application	Operation	Valve Type	Volt	Advance/Return	Advance/Hold Return	Posi-Check® Feature
9500	147	S.A. & D.A.	Manual	4-way, 3 Pos. Tandem Center	—	no	yes	no
9501	147	S.A. & D.A.	Manual	4-way, 3 Pos. Closed Center	—	no	yes	no
9502	146	S.A.	Manual	3-way, 3 Pos. Closed Center	—	no	yes	yes
9504	145	S.A. & D.A.	Manual	3/4-way, 2 Pos.	—	yes	yes	no
9506	147	D.A.	Manual	4-way, 3 Pos. Tandem Center	—	no	yes	yes
9507	147	D.A.	Manual	4-way, 3 Pos. Closed Center	—	no	yes	yes
9511	147	S.A. & D.A.	Manual	4-way, 3 Pos. Open Center	—	yes	yes	no
9512	150	D.A.	Solenoid	4-way, 3 Pos. Tandem Center	24	no	yes	yes
9513	150	D.A.	Solenoid	4-way, 3 Pos. Tandem Center	115	no	yes	yes
9516	150	D.A.	Solenoid	4-way, 3 Pos. Tandem Center	12DC	no	yes	yes
9517	145	S.A.	Manual	2-way, 2 Pos.	—	no	yes	no
9519	150	D.A.	Solenoid	4-way, 3 Pos. Tandem Center	230	no	yes	yes
9520	146	S.A.	Manual	3-way, 3 Pos. Tandem Center	—	no	yes	yes
9522	150	D.A.	Solenoid	4-way, 3 Pos. Open Center	230	yes	no	no
9523	150	S.A.	Pilot Operated Solenoid	3-way, 2 Pos.	230	yes	no	no
9552	149	S.A. & D.A.	Solenoid	3/4-way, 2 Pos.	230	yes	no	no
9553	150	S.A.	Pilot Operated Solenoid	3-way, 2 Pos.	24	yes	no	no
9569	149	S.A.	Solenoid	3-way, 2 Pos.	24	no	yes	no
9570	149	S.A.	Solenoid	3-way, 2 Pos.	230	no	yes	no
9572	149	S.A. & D.A.	Solenoid	3/4-way, 2 Pos.	24	yes	no	no
9576	146	S.A.	Manual	3-way, 3 Pos. Metering Tandem Center	—	no	yes	no
9579	149	S.A.	Solenoid	3-way, 2 Pos.	115	no	yes	no
9582	145	S.A.	Manual	3-way, 2 Pos.	—	no	yes	no
9584	145	S.A.	Manual	3-way, 2 Pos.	—	no	yes	no
9589	150	S.A.	Pilot Operated Solenoid	3-way, 2 Pos.	115	yes	no	no
9590	150	D.A.	Solenoid	4-way, 3 Pos. Open Center	115	yes	no	no
9592	149	S.A. & D.A.	Solenoid	3/4-way, 2 Pos.	115	yes	no	no
9594	149	S.A. & D.A.	Air	3/4-way, 2 Pos.	—	no	yes	yes
9599	148	S.A.	Pilot Operated Solenoid	3-way, 3 Pos. Tandem Center	24	no	yes	yes
9605	148	S.A.	Pilot Operated Solenoid	3-way, 3 Pos. Tandem Center	115	no	yes	yes
9609	148	S.A.	Manual	3-way, 4 Pos. Tandem Center	—	no	yes	no
9610	145	S.A.	Auto Pilot Operated	3-way, 2 Pos.	—	yes	no	no
9610A	145	S.A.	Manual	2/3-way, 2 Pos.	—	no	yes	no
9615	150	D.A.	Solenoid	4-way, 3 Pos. Open Center	24	yes	no	no
9628	151	S.A. & D.A.	Manual	Post Tensioning	—	special	no	no
9632	151	S.A. & D.A.	Manual	Post Tensioning	—	special	no	no

Choosing the right valve
Pages 190-191

Pump mounted valves
Pages 145-151



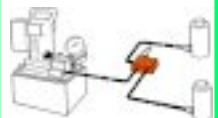
Order No.	Page No.	*Cylinder Application	Operation	Valve Type	Volt	Advance/Return	Advance/Hold Return	Posi-Check® Feature
9508	153	S.A. & D.A.	Manual	4-way, 3 Pos. Closed Center	—	no	yes	yes
9509	153	S.A. & D.A.	Manual	4-way, 3 Pos. Tandem Center	—	no	yes	yes
9514	153	D.A.	Solenoid	4-way, 3 Pos. Tandem Center	115	no	yes	yes
9524	152	S.A. & D.A.	Solenoid	3/4-way, 2 Pos.	230	no	yes	no
9525	153	D.A.	Solenoid	4-way, 3 Pos. Tandem Center	230	no	yes	yes
9526	153	S.A.	Solenoid	3-way, 2 Pos.	230	no	yes	no
9554	152	S.A. & D.A.	Solenoid	3/4-way, 2 Pos.	24	no	yes	no
9555	153	D.A.	Solenoid	4-way, 3 Pos. Tandem Center	24	no	yes	yes
9556	153	S.A.	Solenoid	3-way, 2 Pos.	24	no	yes	no
9559	153	S.A.	Solenoid	3-way, 2 Pos.	115	no	yes	no
9593	152	S.A. & D.A.	Solenoid	3/4-way, 2 Pos.	115	no	yes	no
9595	152	S.A. & D.A.	Air	3/4-way, 2 Pos.	—	no	yes	no

Remote mounted valves
Pages 152-153



Order No.	Page No.	*Cylinder Application	Operation	Valve Type	Volt	Advance/Return	Advance/Hold Return	Posi-Check® Feature
9575	155	S.A.	Manual	Shut-off Valve	—	—	—	—
9580	155	S.A.	Automatic	One-way Check Valve	—	—	—	—
9581	155	S.A. & D.A.	Automatic	Pilot Op. Check Valve	—	—	—	—
9596	154	S.A.	Manual	Load Lowering Valve	—	—	—	—
9597	154	S.A. & D.A.	Automatic	Sequence Valve	—	—	—	—
9608	154	S.A. & D.A.	Automatic	Pressure Reducing Valve	—	—	—	—
9623	155	S.A. & D.A.	Automatic	Pressure Relief Valve	—	—	—	—
9631	155	S.A. & D.A.	Automatic	Metering Valve	—	—	—	—
9633	155	S.A. & D.A.	Automatic	Pressure Regulator Valve	—	—	—	—
9720	154	S.A. & D.A.	Automatic	Counter Balance Valve	—	special	—	—
9721	154	S.A. & D.A.	Automatic	Counter Balance Valve	—	special	—	—
RV12178	155	—	Automatic	Relief Valve	—	—	—	—

In-line valves
Pages 154-155



* "S.A." represents single-acting cylinders, "D.A." represents double-acting cylinders