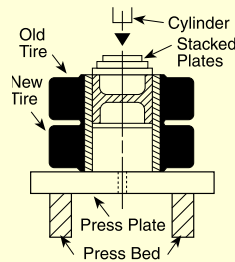


Rubber tire removing/installing set

Now an easy way to press solid rubber tires. The TPP200 uses plates instead of combination rings to press a rim from an old tire into a new one. Plates are stacked so none is more than 50.8 mm smaller than the one under it to keep the plates from bending. They can be used on any Power Team press with 55 ton capacity or more. **NOTE:** Many tires require 100 tons of force or more, depending on tire size and condition. These plates withstand max. force of 150 tons.



Pressing rim into new tire on Power Team Press.

Set No. TPP200		
Order No.	Tire Size I.D.	Plate O.D.
TPP1	102 mm	98.4 mm
TPP2	127 mm	123.8 mm
TPP3	152, 159 mm	149.2 mm
TPP4	165 mm	161.9 mm
TPP5	203 mm	200 mm
TPP6	254 mm	250.8 mm
TPP7	267 mm	263.5 mm
TPP8	286 mm	282.6 mm
TPP9	305, 308 mm	301.6 mm
TPP10	356 mm	352.4 mm
TPP11	381 mm	377.8 mm
TPP12	406 mm	403.2 mm
TPP13	451 mm	447.7 mm
TPS6	Spacer/Pushing Adapter	82.6 x 152.4 mm
TBP1622	Bed Plate	406 x 559 x 31 mm

Set No. TPP200

TBP1622
406 mm x 559 mm x 50.8 mm

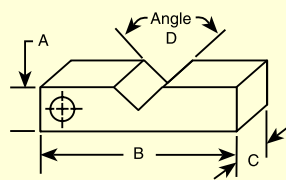
TPP1 – TPP13
98.4 mm x 448 mm x 19.1 mm

TPS6
95.3 mm x 152.4 mm

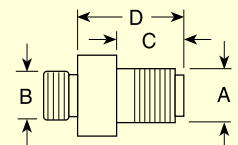
No. TPP200 – Tire press plate set. Includes 13 press plates, spacer pushing adapter and press bed plate. For use on solid rubber tires from 102 mm to 451 mm I.D.

Press accessories, “V” blocks & threaded adapters

V-BLOCKS (mm)				
Order No.	Width A	Length B	Thick C	Angle D
1890	50.8	228.6	31.8	120°
1891	63.5	292.1	44.5	
1892	88.9	355.6	50.8	
1893	127	355.6	38.1	
207395	146.1	584.2	63.5	



THREADED ADAPTER DIMENSIONS				
Adapter No.	A	B	C (mm)	D (mm)
38597	1- 8	1- 8	19.1	33.3
38953	1 1/4 - 7	1 1/2 - 16	69.9	111.1
37368	1 1/8 - 5 1/2	—	42.9	63.5
43562	2 1/4 - 12	—	57.2	76.2
38954	1 1/8 - 5 1/2	1 1/2 - 8	82.6	106.4
43563	2 1/4 - 12	2 3/4 - 12	57.2	81
46070	2 1/4 - 12	2 - 4 1/2	57.2	81

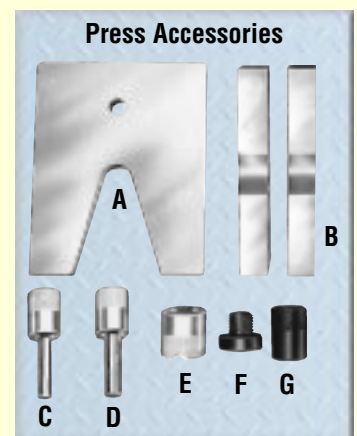


Press accessory kit

Make your Power Team press even more versatile with one of these accessory sets. These sets will eliminate makeshift set-ups. Many of these items can be used with pullers you already have.

ORDERING INFORMATION

Use With Press:	Order No.	A V-Throat Press Plate	B V-Blocks	C Pushing Adapter	D Pushing Adapter	E V-Pushing Adapter	F Threaded Adapter	G Pushing Adapter
10 Ton	SPA10	1888	1890 (Pr.)	201923 12.7 mm dia. shank	201454 19 mm dia. shank	34806	Included in Set 38597 38597	—
25 Ton	SPA25	1889	1891 (Pr.)	34510 19 mm dia. shank	34511 25.4 mm dia. shank	34807	Included in Set 38953 38953	—
55 Ton	SPA55	—	1892 (Pr.)	34755 25.4 mm dia. shank	34756 31.8 dia. shank	34808	Not Included Order Separately 37368 38954	—
80/100 Ton	SPA100	—	1893** (Pr.)	—	—	36469	Not Included Order Separately 43562 43563 46070***	21332
150/200 Ton	SPA200	—	207395 (Pr.)	—	44458 57.1 mm dia. shank	44457	None*	—



CAUTION: Pushing adapters are designed for use with specific shaft sizes, and depending on the condition of the shaft ends, the adapter may not withstand the full press tonnage. Always use a protective blanket or other suitable guard when pressing.

* Pushing adapters thread directly into RD15013 and RD20013 cylinders.
 ** V-blocks, No. 1893, are recommended for use with 80-ton Roll-Bed press. Not recommended for use with 100 ton Roll Bed.
 *** For 80-ton Roll-Bed press.
NOTE: Individual press accessories may be ordered separately.