

“Enforcer 55” Universal Puller

55 Ton Capacity



NOTE: Four cylinder extensions (not pictured) are included. The included lifting eyes (not pictured) permit use of an overhead crane to raise entire assembly.

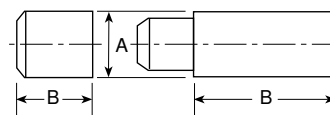
- 1** Hydraulic lift system for easy, precise position of puller.
- 2** Unique dual pump arrangement: Low pressure pump positions, holds and opens jaws. The high pressure pump advances and retracts the pushing cylinder without releasing clamped jaws.
- 3** Hydraulically-actuated jaws. Cylinder moves in or out to provide a safe, secure grip on workpiece.
- 4** Puller can be assembled in 2 or 3 jaw configurations.
- 5** Choice of cylinder with a 159 mm or 337 mm stroke.
- 6** Self-centering: Center cylinder on work; puller jaws will automatically grip work evenly.
- 7** Super Grip-O-Matic® feature means the harder the pull, the tighter the puller jaws grip. No chains or cages required to keep puller jaws from slipping or springing off the part being pulled.
- 8** Guards at pinch points protect operator.
- 9** Cart's swivel casters give ease of mobility.
- 10** Large wheels make movement of cart easy.
- 11** Puller can be mounted on cart 90 degrees to right or left of puller cart centerline, permitting use in tight quarters, such as between machinery.



Conversion kit

No. 251468 – Kit converts PH553C series to PH5532CL series. Jaws are 305 mm longer. Kit contains three jaws and six straps with guards. Wt., 114 kg.

Pushing adapters



251002	350593
	350594
	350637

Order No.	A (mm)	B (mm)	Qty. *
251002	69.9	69.9	1
350593	69.9	152.4	2
350594	69.9	76.2	1
350637	69.9	254.0	1

*Number of adapters supplied with each Enforcer

ORDERING INFORMATION *Cart and Puller (cart width is 813 mm)

Order Number	Min Spread (mm)	Reach @ Min. Spread (mm)	Max. Spread (mm)	Reach @ Max. Spread (mm)	Overall Length* (mm)	Cylinder Stroke (mm)	Power Source Requirements	Prod. Weight (kg)
PH553C	101.6	559	1,219	356	2,286	159	115 V, 60Hz, 25 Amp Cap.	339
PH553C13	101.6	381	1,219	178	2,286	337	115V, 60Hz, 25 Amp Cap.	352
PH553CL	63.5	829	1,149	737	2,591	159	115V, 60Hz, 25 Amp Cap.	366
PH553CL13	63.5	651	1,149	559	2,591	337	115V, 60Hz, 25 Amp Cap.	379
PH553C-230	101.6	559	1,219	356	2,286	159	230V, 50/60Hz, 15 Amp Cap.	339
PH553C13-230	101.6	381	1,219	178	2,286	337	230V, 50/60Hz, 15 Amp Cap.	352
PH553CL-230	63.5	829	1,149	737	2,591	159	230V, 50/60Hz, 15 Amp Cap.	366
PH553CL13-230	63.5	651	1,149	559	2,591	337	230V, 50/60Hz, 15 Amp Cap.	379

Puller jaw tip dimensions

A	B	C
22 mm	32 mm	48 mm

