

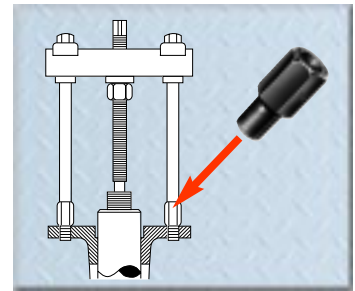
Male-female threaded adapters

These adapters are used on ends of Push-Puller® legs, with forcing screws or slide hammers to assist in pulling shafts, bearing caps, pinions, and many other parts.

Nos. 8000–8029 – each sold individually.

Female End	Male End	Lg. (mm)	Part No.	Female End	Male End	Lg. (mm)	Part No.
5/8"-18	1/4"-20	57.2	8000	5/8"-18	3/4"-10	57.2	8015
5/8"-18	5/16"-18	57.2	8001	1"-14	3/4"-10	63.5	8016
5/8"-18	7/16"-14	57.2	8002	5/8"-18	7/8"-14	57.2	8017
5/8"-18	7/16"-20	57.2	8003	5/8"-18	7/8"-9	57.2	8018
5/8"-18	3/8"-24	57.2	8004	5/8"-18	1"-14	57.2	8019
5/8"-18	3/8"-16	57.2	8005	1"-8	5/8"-18	76.2	8020
5/8"-18	1/2"-20	57.2	8006	1"-8	1"-14	76.2	8021
5/8"-18	1/2"-13	57.2	8007	5/8"-18	1/8"-pipe	57.2	8022
5/8"-18	9/16"-18	57.2	8008	1 1/4"-12	1"-14	114.3	8023
5/8"-18	9/16"-12	57.2	8009	1 1/4"-12	1 3/4"-12	120.7	8024
5/8"-18	5/8"-11	57.2	8010	1 1/4"-7	5/8"-18	101.6	8025
1"-14	5/8"-11	57.2	8011	1 1/4"-7	1"-14	101.6	8027
1"-14	5/8"-18	81.0	8012	1 5/8"-5 1/2	1"-8	101.6	8028
5/8"-18	3/4"-16	57.2	8013	1 5/8"-5 1/2	1"-14	101.6	8029
1"-14	3/4"-16	63.5	8014				

Fed. Spec.: GGG-P-00781-D



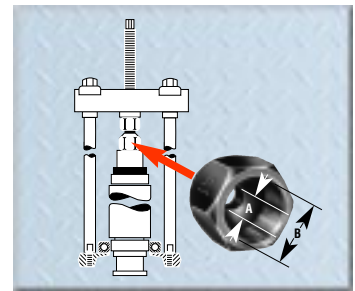
Female threaded adapters

Use these adapters on the ends of Push-Puller® forcing screws, legs, or slide hammers in the removal and installation of shafts, axles, and housings.

Set No. 8044 – consists of a set of 6 adapters (Nos. 8037-8042)

Nos. 8035, 8036, 8043; – sold individually.

Set No. 8044					
Female End "A"	Female End "B"	Part No.	Female End "A"	Female End "B"	Part No.
1/2"-20	5/8"-18	8035	5/8"-18	1 1/8"-12	8041
1"-14	1"-14	8036	5/8"-18	1 1/4"-12	8042
5/8"-18	5/8"-18	8037	5/8"-18	1 1/2"-12	8043
Female End "A"	Female End "B"	Part No.			
5/8"-18	3/4"-16	8038			
5/8"-18	7/8"-14	8039			
5/8"-18	1"-14	8040			



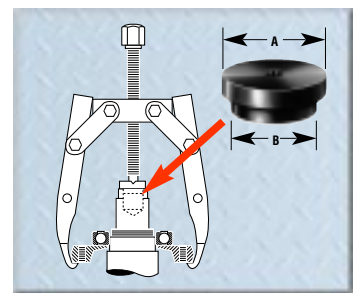
Step plate adapter sets

Power Team step plate adapters are necessary for pulling and installing bearings, gears, or other parts on hollow shafts or housings. Puller screw forces against step plate adapter, as shown at right. May be used with Power Team jaw-type pullers, Push-Pullers® and shop presses.

Set No. 8075 – set of 11 adapters (Nos. 8057-8067).

Set No. 8076 – set of 6 adapters (Nos. 8068-8073).

Set No. 8075					
Diameter "A" (mm)	Diameter "B" (mm)	Part No.	Diameter "A" (mm)	Diameter "B" (mm)	Part No.
25.4	19.1	8057	47.5	38.1	8063
28.4	22.1	8058	50.8	41.1	8064
31.8	25.4	8059	53.8	44.5	8065
34.8	28.4	8060	60.2	47.5	8066
41.1	31.8	8061	63.5	50.8	8067
44.5	34.8	8062			
Set No. 8076					
Diameter "A" (mm)	Diameter "B" (mm)	Part No.	Diameter "A" (mm)	Diameter "B" (mm)	Part No.
66.5	53.8	8068	76.2	63.5	8071
69.9	57.2	8069	82.6	69.9	8072
72.9	60.3	8070	88.9	76.2	8073

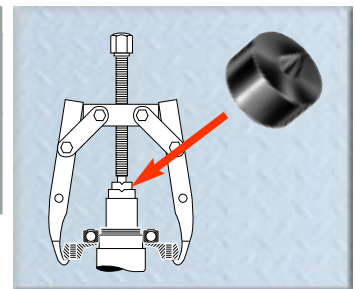
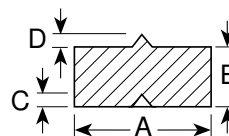


Shaft protector set

Power Team shaft protectors are designed to protect shaft centers from distortion when extreme pressures are applied with jaw-type pullers or Push-Pullers®. Shaft protectors are inserted between the end of the puller screw and the shaft.

Set No. 8056 – Set of 6 shaft protectors (Nos. 8050 thru 8055).

Set No. 8056									
"A" (60°) (mm)	"B" (60°) (mm)	"C" (60°) (mm)	"D" (60°) (mm)	Part No.	"A" (60°) (mm)	"B" (60°) (mm)	"C" (60°) (mm)	"D" (60°) (mm)	Part No.
38.1	19.1	9.4	11.1	8050	19.1	19.1	6.4	6.4	8053
31.8	19.1	9.4	9.4	8051	15.7	15.7	6.4	6.4	8054
25.4	19.1	9.4	7.9	8052	15.7	15.7	4.8	4.8	8055



CAUTION: All the items shown may not withstand the full tonnage of the pullers they may be used with. Refer to page 188.