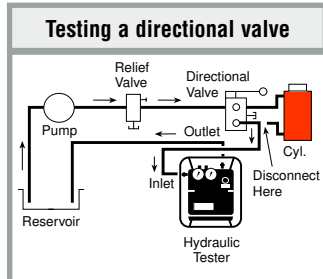
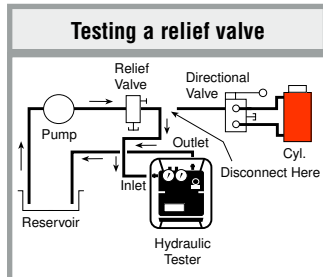
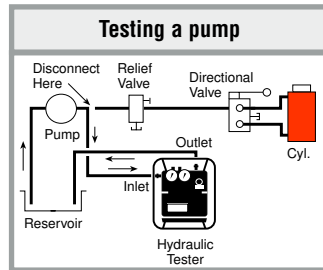


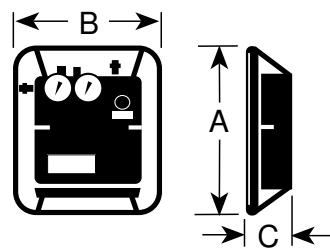
Hydraulic Testers

200, 300 and 750 L/min.



200, 300 and 750 L/min. In-Line Hydraulic Testers

- Accurately measure oil flow, pressure and temperature on in-plant equipment, fork lifts, machine tools and more.
- Temperature and flow readings are in Metric and English, accurate to within $\pm 2\%$ of full scale.
- Dual pressure gauges for high and low pressure readings; low pressure gauge is automatically shut off and protected as pressure rises beyond its maximum reading.
- Automatic pressure compensating feature lets you increase flow without affecting pressure setting.
- Reverse flow through tester will not cause damage; replaceable safety disc ruptures if pressure exceeds upper limit.
- Solid state voltage regulator eliminates errors caused by voltage change during testing.



200, 300 and 750 L/min. In-Line Hydraulic Testers

- Troubleshoots systems with capacities to 200 L/min. (HT50A) at pressures less than 350 bar. Accurately measure oil flow to $\pm 5\%$, pressure to within 2% and temp. readings within 1%.
- Pressure gauge is liquid filled to dampen system pulsation. For more precise low pressure readings, an optional dual pressure gauge kit is available (see page 169).

No. HT50A – Hydraulic circuit tester with single liquid filled pressure gauge, 0-354 bar, 0-5,000 psi. Includes two adapter unions for $\frac{3}{4}$ " male NPTF fittings. Wt., 16.8 kg.

ORDERING INFORMATION

Order Number	Maximum Flow (gpm)	Flow Ranges			Max. Oper. Pressure		Temp. Scale Range		Port Sizes	Weight		Dimensions	
		Scale	gpm	L/min.	psi	BAR	°F	°C		lbs.	kg.	in.	mm
HT50A	50	—	0-50	0-200	5,000	345	20-240	-6 to 114	1 $\frac{1}{16}$ -12UN Female "O" Ring with Union Adapt. $\frac{3}{4}$ " Female NPTF	30.3	16.8	A = 12 $\frac{1}{4}$ " B = 6 $\frac{1}{4}$ " C = 10"	A = 311 B = 159 C = 255
HT75	75	High	15-75	50-300	5,000	345	100-250	40-120	$\frac{3}{4}$ " NPT Swivel	18.2	8.6	A = 13 $\frac{3}{4}$ " B = 11 $\frac{7}{8}$ " C = 5 $\frac{3}{4}$ "	A = 349.25 B = 301.62 C = 146.05
		Low	3-15	10-60									
HT200	200	High	25-200	100-750	5,000	345	100-250	40-120	1 $\frac{1}{2}$ "* SAE Split Flange	28.2	13.6	A = 15 $\frac{7}{8}$ " B = 13 $\frac{1}{4}$ " C = 6 $\frac{3}{4}$ "	A = 403.47 B = 336.55 C = 171.45
		Low	5-40	20-150									

For a complete listing of accessories for the HT series of hydraulic system testers, see pages 169-170.

* Not included, must be ordered separately, see page 170.