

# Hydraulic Punches

## 20 Ton Capacity

Accessories/Punch & Die Sets  
Page 166



Technical Info  
Page 172-173



- The fastest, easiest way to make round, square or oval holes in a variety of metals up to 12.7 mm thick. Punches aluminum, brass, copper and stainless steel. Fully complies with ASME B30.1 standard.
- Suitable for punching up to 13.5 mm dia. in 12.7 mm thick mild steel or 20.6 mm dia. in 7.9 mm thick mild steel.
- Double-acting. Fully portable, or can be bench mounted using holes in frame.
- Punch mounted 4-way valve. The PE102AR "Quarter Horse" electric/hydraulic pump is an ideal power source. For increased speed, the PE172A or PE172A-50-220 electric/hydraulic pumps may also be used.
- A selection of beveled dies to accommodate channel iron flanges is available.

**No. HP20** – Basic punch frame with cylinder, valve, handle assembly and two coupling nuts (252001 and 252002). Wt., 15 kg.

**No. HP20S** – Basic punch frame with cylinder, valve, handle, two coupling nuts, plus five punch and die sets in 6.4, 7.9, 9.5, 11.1 and 13.5 mm dia. Wt., 15.9 kg.

**No. HP20SP-220\*** – Complete punch set with PE102AR-220 pump (220/230V, 50/60Hz), HP20HS hand switch, 9682 nipple, two 9792 female couplers and two 9793 male couplers. Also includes two 9758 3 m hoses, 9680 coupling, and same punch and die sets as in HP20S (above). Tool is completely assembled and pre-filled with oil. In storage box. Wt., 37.7 kg.

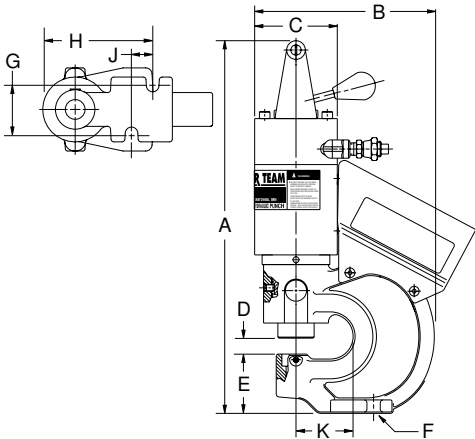
\*Available with 115V, 50/60 Hz. motor. Order No. HP20SP



HP20

### Punch set HP20SP

Includes the PE102AR pump, HP20HS hand switch, hoses, couplers, punch and die sets in sizes 6.4, 7.9, 9.5, 11.1 and 13.5 mm diameter, all packed in a handy storage box.



Special Order Punch & Die Shapes* (mm)		
Max. 20.6 	Max. 20.7 	Max. 20.7 
Rectangle Type N	Single "D" Type N	Double "D" Type P
Max. 17.9 	Max. 17.5 	
Hexagon Type T	Triangle Type S	

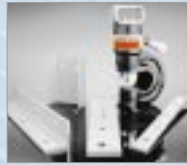
\*Consult factory

### SPECIFICATIONS

Cap. (tons)	Order Number	Max. Oper. Press.	Oil Cap.	Max. Material Thickness	A	B	C	D	E	Mtng. Holes F	G	H	J	Max. Throat Depth K	L	M	N	O	P	Q
20	HP20	700 bar	64 ccm	12.7 mm	419 mm	202 mm	93 mm	16 mm	66 mm	14 mm	54 mm	124 mm	24 mm	57 mm	—	—	—	—	—	—

# Hydraulic Punches

## 35 Ton Capacity



- Punches a smooth, precise hole in seconds; much faster than drilling. Can handle mild steel up to 12.7 mm thick.
- Fully portable for construction, maintenance and service applications, or can be mounted on a workbench for production jobs. Has carrying handle for precise locating.
- Rugged, forged steel "C" frame for great strength and durability.
- Dual action, spring loaded stripper holds material during punching operation, strips material from punch on return. Scribe lines on stripper aid in locating the punch.
- The PE172-50-220 electric/hydraulic pump is an ideal power source.



Accessories/Punch & Die Sets  
Page 166



Technical Info  
Page 172-173



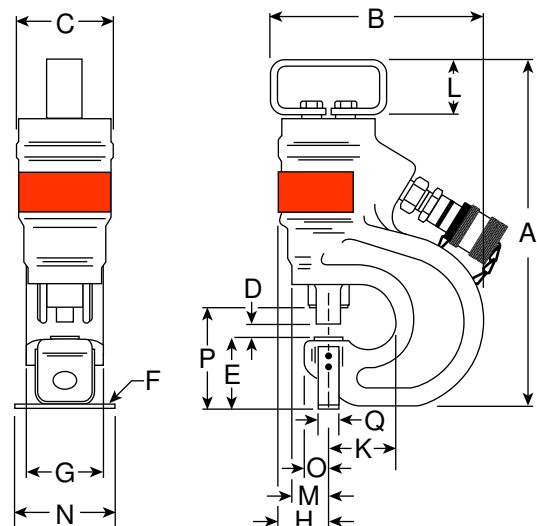
**No. HP35** – Hydraulic punch only. Includes metal carrying case and die change tools. Wt., 19.3 kg.

**No. HP35S** – Hydraulic punch with punches and dies. Includes HP35 punch, metal carrying case and 250459 punch and die set. Wt., 20 kg.

**No. HP35P-220** – Hydraulic punch set with hydraulics. Same contents as HP35SP-220, but does not include punch and die set. Wt., 39.2 kg. **NOTE:** Available in 115 volt, 50/60 Hz. To order, remove suffix "-220" from Order No.

**No. HP35SP-220** – Hydraulic punch set with hydraulics. Includes HP35 hydraulic punch, PE172-50-220 electric/hydraulic pump, 9756 hose, 9798 hose half coupler, 250459 punch and die set, metal carrying case. Wt., 39.9 kg. **NOTE:** Available in 115 volt, 50/60 Hz. To order, remove suffix "-220" from Order No.

**No. 250459** – Punch and die set for round holes. Consist of one each: PD437 11.1 mm punch/die, PD562 14.3 mm punch/die, PD688 17.5 mm punch/die, PD812 20.6 mm punch/die. Each punch/die size is also available separately. Wt., 0.7 kg.



### SPECIFICATIONS

Cap.	Order Number	Max. Oper. Press.	Oil Cap.	Max. Material Thickness	A	B	C	D	E	Mtng. Holes F	G	H	J	Max. Throat Depth K	L	M	N	O	P	Q
35	HP35	700 bar	75 ccm	12.7 mm	349 mm	229 mm	95 mm	14 mm	73 mm	6 mm	76 mm	46 mm	—	71 mm	57 mm	38 mm	89 mm	22 mm	102 mm	19 mm