

Hydraulic Valves

Pump Mounted, Manual and Pilot Operated

700 bar, 3/8" ports, 19 L/min. max flow rate.

3-way/2-position manual valves

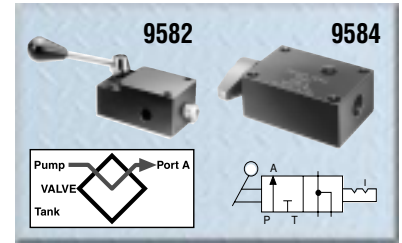
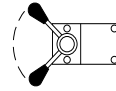
Applications: *Single-acting cylinders.* **Actuation:** Lever operated.

Functions: Cylinder piston “advance”, “hold” and “return”.

Used on these pumps: P460, PE17, PE21, PE30, PE46, PE55, PE84, PE90, PE120, PQ60 and PQ120 series.

No. 9582 – 3-way/2-position manual valve. Wt. 1.1 kg.

No. 9584 – Same as 9582, but has “flipper” control. Wt., 0.8 kg.



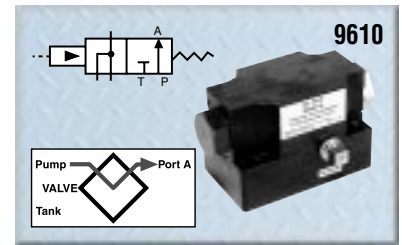
3-way/2-position, pilot operated automatic valve

Application: *Single-acting cylinders.* **Actuation:** Pilot oil.

Functions: When pump is started, pilot oil automatically closes valve and directs oil to cylinder; when pump is stopped, valve automatically opens and oil returns to reservoir.

Used on these pumps: Furnished with pilot lines and adapters for PA55, PA90, PE30, PE55, PE90 and PE120 series.

No. 9610 – 3-way/2-position pilot operated automatic valve. Wt., 1.9 kg.



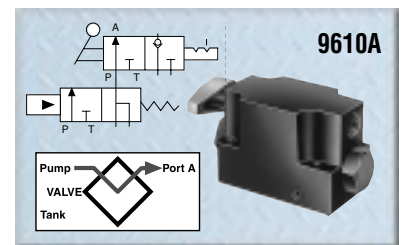
2/3-way/2-position manual/pilot operated automatic valve

Application: *Manual operation for load lifting and holding with single-acting cylinders; automatic “dump” for operating hydraulic tools.* **Actuation:** Flipper lever/pilot oil.

Functions: With lever in closed position, valve will hold the load. When lever is “open”, valve functions as a true automatic “dump” valve.

Used on these pumps: Furnished with pilot lines and adapters for PA55, PA90, PE30, PE55, PE90 and PE120 series. For application on other pumps, consult factory.

No. 9610A – 2/3-way/2-position manual/pilot operated automatic valve. Wt., 2 kg.



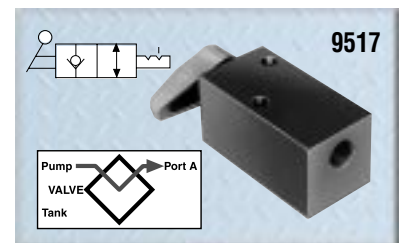
2-way/2-position manual valve

Application: *Single-acting cylinders.* **Actuation:** Flipper lever operated.

Functions: Cylinder piston “advance”, “hold” and “retract”.

Used on these pumps: PE172, PA172 and PE84 series.

No. 9517 – 2-way/2-position manual valve. Wt., 1.5 kg.



3/4-way/2-position manual valve

Application: *Single- or double-acting cylinders.* **Actuation:** Lever operated, detent positioned.

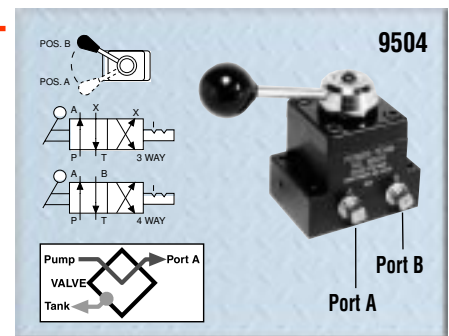
Functions: Pos. 1 – Oil is directed to “advance” side of cylinder, oil from “retract” side goes to reservoir; cylinder “holds” with pump shut off. Pos. 2 – Oil goes to “retract” side of cylinder; cylinder “holds” with pump shut off. When using as a 3-way valve for single-acting cylinders, port “A” or “B” is plugged.

See note on page 146 regarding plugging of ports and resulting heat build-up.

Used on these pumps: P460, PA6D, PA17, PA46, PA55, PA60, PE17, PE21, PE30, PE46, PE55, PE84, PE90, PE120, PE200, PE400, PQ60 and PQ120 series.

No. 9504 – 3/4-way/2-position manual valve. Wt., 1.9 kg.

NOTE: 9504 can be remote mounted with a 9510 subplate (see page 163).



NOTE: A pressure switch and/or gauge may be attached to any valve on this page. (refer to pages 76-77, 163)

CAUTION: To prevent sudden, uncontrolled descent of a load as it is being lowered, use a No. 9596 Load Lowering Valve or No. 9720 Counter Balance Valve (see page 154) in conjunction with the directional valve used in your application.

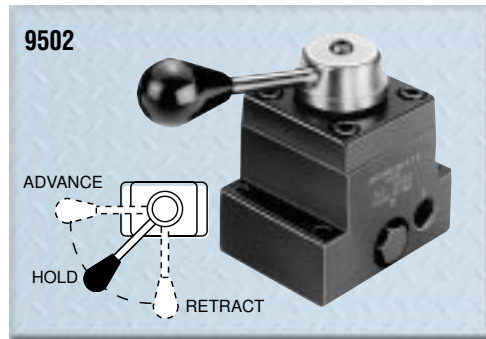
IMPORTANT: Conversion kit 251528 must be used when mounting any of the valves on this page on PA17 or PE17 pumps.

IMPORTANT: When ordering any valve for a PE30 or PG30 series pump, 12.7 mm longer mounting screws are required. For valves 9504, 9584, 9610 and 9610A, order four 12001 cap screws. For valve 9582, order two 12001 and two 10856 cap screws.

Hydraulic Valves

Pump Mounted

700 bar, 3/8" ports, 19 L/min. max flow rate.



3-way/3-position (closed center) non-interflow manual valve with "Posi-Check®"

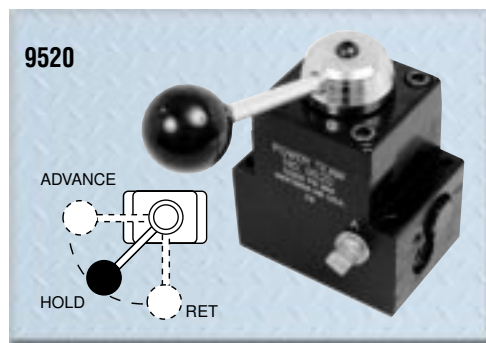
Application: Single-acting cylinders. **Actuation:** Lever operated, detent positioned.

Functions: Pos. 1 – Oil is directed from pump to cylinder and “holds” with pump shut off; line to reservoir is blocked. Pos. 2 – All oil is open to reservoir through tank line. Center pos. – Cylinder pressure is held; pump should be shut off.

Used on these pumps: P460, PA17, PA46, PA55, PA60, PE17, PE21, PE30, PE46, PE55, PE84, PE90, PE120, PE200, PE400, PQ60 and PQ120 series.

NOTE: A pressure switch and/or gauge may be attached if desired (see pages 76-77, 163). Also, the 9502 can be remote mounted if a 9510 subplate is used (see page 163).

No. 9502 – 3-way/3-position (closed center) manual valve. Wt., 1.9 kg.



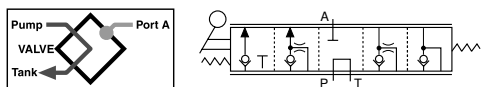
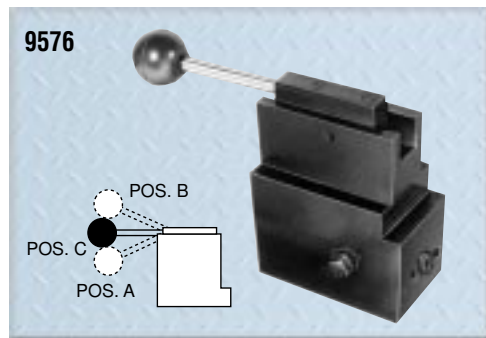
3-way/3-position (tandem center) manual valve with "Posi-Check®"

Application: Single-acting cylinders. **Actuation:** Lever operated, detent positioned.

Functions: “Advance” “hold” and “return”. When shifted to “return” position, pump and cylinder return oil through their own separate return lines, allowing faster retraction of piston. The “Posi-Check®” feature guards against pressure loss when shifting from “advance” to “hold” position.

Used on these pumps: P460, PA17, PA46, PA55, PE17, PE21, PE30, PE46, PE55, PE84, PE90, PE120, PQ60, PQ120, PE200, PE400, PG30, PG55, PG120 and PG400 series.

No. 9520 – 3-way/3-position (tandem center) manual valve. Wt., 2.3 kg.



3-way/3-position (tandem center) metering valve

Application: Single-acting cylinders. **Actuation:** Lever operated.

Functions: Cylinder piston metered “advance”, “hold” and metered “return”.

Used on these pumps: PA17, PA46, PA55, PE17, PE21, PE30, PE46, PE55, PE84, PE90, PE120, PQ60, PQ120, PE200, PE400, PG30, PG55, PG120 and PG400 series.

NOTE: A pressure switch and/or gauge may be attached if desired (see pages 76-77, 163). Also, the 9576 can be remote mounted with a 9510 subplate (see page 163).

No. 9576 – 3-way/3-position (tandem center) metering valve. Wt., 3.9 kg.

CAUTION: To prevent sudden, uncontrolled descent of a load as it is being lowered, use a No. 9596 Load Lowering Valve or No. 9720 Counter Balance Valve (see page 154) in conjunction with the directional valve used in your application.

NOTE: Valves 9501, 9502, 9504 and 9507 can have a port blocked or have a closed center position. When a port is blocked and the valve is shifted to the blocked port, the pump will generate excessive heat. An electric or rotary air pump can either be turned off manually or with a pressure switch. Reciprocating air pumps may be adjusted to stall out and stop. **NOTE:** Gauge ports monitor pump pressure only, not pressure to the hydraulic cylinder(s).

IMPORTANT: Conversion kit 251528 must be used when mounting any of the valves on this page on PA17 or PE17 pumps.

IMPORTANT: When ordering any valve for a PE30 or PG30 series pump, 12.7 mm longer mounting screws are required. For valves 9502 and 9520, order four 12001 cap screws. For valve 9576, order four 17428 cap screws.

Hydraulic Valves

Pump Mounted

700 bar, $\frac{3}{8}$ " ports, 19 L/min. max flow rate.

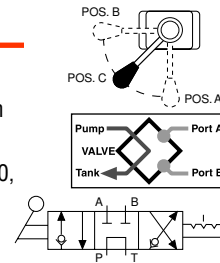
4-way/3-position (tandem center) valve with "Posi-Check"

Application: Double-acting cylinders. **Actuation:** Lever operated, detent positioned.

Functions: "Advance", "hold" and "return". The "Posi-Check" feature guards against pressure loss when shifting from "advance" to "hold" position.

Used on these pumps: P460, PA6D, PA17, PA46, PA55, PE17, PE21, PE30, PE46, PE55, PE84, PE90, PE120, PE200, PE400, PED, PG30, PG55, PG120, PG400, PQ60 and PQ120 series

No. 9506 – 4-way/3-position (tandem center) manual valve. Wt., 2.3 kg.



4-way/3-position (tandem center) and (open-center) manual valves

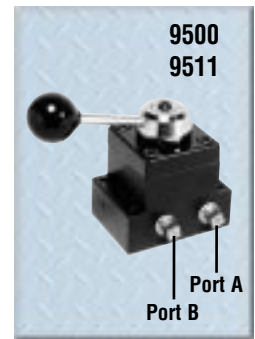
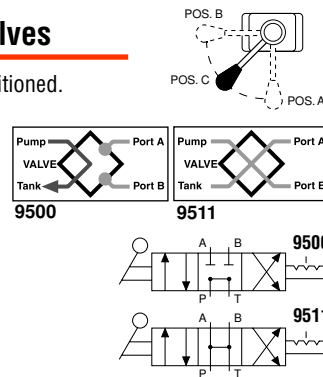
Application: Single- or double-acting cylinders. **Actuation:** Lever operated, detent positioned.

Functions: The 9500 provides "advance", "hold" and "return". The 9511 (open center) valve can be used if holding is not a requirement, as when running two separate hydraulic tools. Provides "advance" and "return" only.

Used on these pumps: P460, PA17, PA46, PA55, PE17, PE21, PE30, PE46, PE55, PE84, PE90, PE120, PE200, PE400, PG30, PG55, PG120, PG400, PQ60 and PQ120 series.

No. 9500 – 4-way/3-position (tandem center) manual valve. Wt., 1.9 kg.

No. 9511 – Same as 9500, except has an open center.



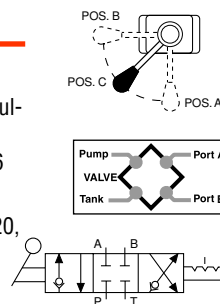
4-way/3-position (closed center) manual valve with "Posi-Check"

Application: Single- or double-acting cylinders. **Actuation:** Lever operated, detent positioned.

Functions: Similar to 9506, but is a closed center valve with "Posi-Check". Generally used to operate multiple cylinders with a single pump. Provides "advance", "hold" and "return". The "Posi-Check" feature guards against pressure loss when shifting from the "advance" to "hold" position. See note on page 146 regarding plugging of ports and resulting heat build-up.

Used on these pumps: P460, PA17, PA46, PA55, PA60, PE17, PE21, PE30, PE46, PE55, PE84, PE90, PE120, PE200, PE400, PQ60 and PQ120 series.

No. 9507 – 4-way/3-position (closed center) manual valve. Wt., 2.3 kg.



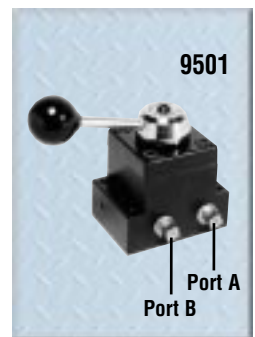
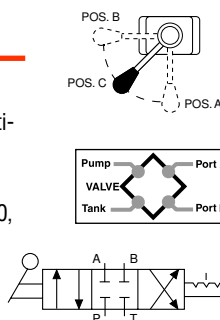
4-way/3-position (closed center) manual valve

Application: Single- or double-acting cylinders. **Actuation:** Lever operated, detent positioned.

Functions: "Advance", "hold" and "return". Closed center design makes valve suitable for operating multiple cylinders from a single pump. See note on page 146 regarding plugging of ports and resulting heat build-up.

Used on these pumps: P460, PA17, PA46, PA55, PA60, PE17, PE21, PE30, PE46, PE55, PE84, PE90, PE120, PE200, PE400, PQ60 and P120 series.

No. 9501 – 4-way/3-position (closed center) valve. Wt., 1.9 kg.



NOTE: A pressure switch and/or gauge may be attached to valves 9500, 9501, 9506, 9511 if desired (see pages 76-77, 163). Also, all valves on this page may be remote mounted with a 9510 subplate (see page 163).

CAUTION: To prevent sudden, uncontrolled descent of a load as it is being lowered, use a No. 9596 Load Lowering Valve or No. 9720 Counter Balance Valve (see page 154) in conjunction with the directional valve used in your application.

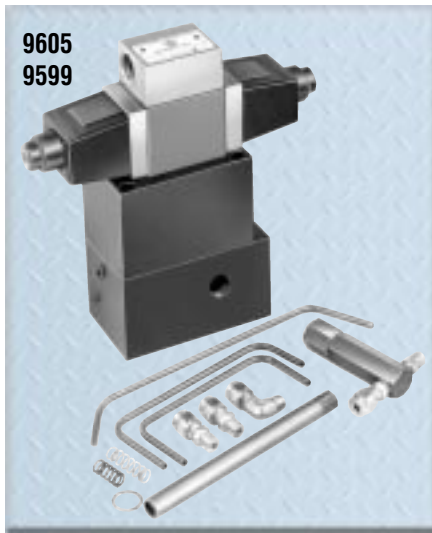
IMPORTANT: Conversion kit 251528 must be used when mounting any of the valves on this page on PA17 or PE17 pumps.

IMPORTANT: When ordering any valve for a PE30 or PG30 series pump, 12.7 mm longer mounting screws are required. For valves 9500, 9501 and 9511, order four 12001 cap screws. For valves 9552, 9506 and 9507, order four 11956 cap screws.

Hydraulic Valves

Pump Mounted

700 bar, 3/8" ports, 19 L/min. max flow rate.



3-way/3-position (tandem center) solenoid valves with "Posi-Check"

Application: Single-acting cylinders.

Actuation: Solenoid operated: 9605 is 115 volt, 50/60 Hz; 9599 is 24 volt, 50/60 Hz.

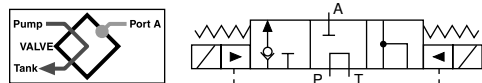
Functions: "Advance", "hold" and "return" positions. When in "advance", solenoid "B" is energized and oil goes from pump to cylinder through pressure port. In "return" position, solenoid "A" is energized and oil is directed from cylinder and pump to reservoir. With both solenoids de-energized, in "hold" position, oil from pump is directed back to reservoir while oil is checked in cylinder. The "Posi-Check" feature holds load when shifting from "advance" to "hold" position.

Used on these pumps: Furnished with pilot lines and adapters for PE55, PE30 (carrying handles must be removed) and PE120 series. For application on other models, consult factory.

No. 9605 – 3-way/3-position (tandem center) solenoid valve, 115 volt, 50/60 Hz. Wt., 6.4 kg.

No. 9599 – Same as 9605 except for 24 volt, 50/60 Hz circuits.

NOTE: Valves above are shipped without controls. Use 202777 remote hand control (see page 162). Consult factory for field installation.



3-way/4-position manual pressure compensated valve

Application: Single-acting cylinders. Primarily for use in testing soil, rock, concrete, asphalt and related engineering materials.

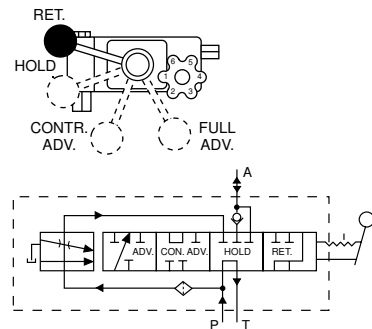
Actuation: Lever and adjustable, pressure compensated flow control valve.

Functions: Cylinder piston "return", "hold", "controlled advance" (pressure compensated) and "advance" (full flow). Will deliver a relatively constant flow regardless of pressure between 70 and 700 bar

Used on these pumps: PA17, PA46, PA55, PE17, PE21, PE30*, PE46, PE55, PE90, PE200, PE400, PG30*, PG55, PG120, PG400, PQ60 and PQ120 series. * **NOTE:** Adapter kit 252161 is required for mounting this valve to a PE30 or PG30 series pump.

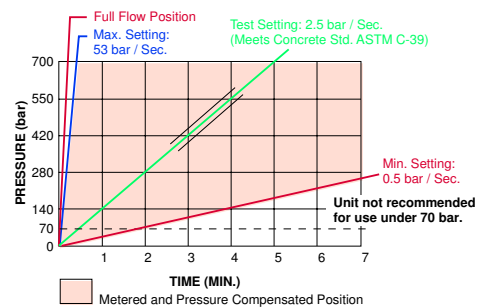
NOTE: This valve can be remote mounted with a 9510 subplate (see page 163).

No. 9609 – 3-way/4-position manual pressure compensated valve. Wt., 4 kg.



Flow:
Full flow position — 19 L/min. (Ref.)
Metered advance position - 1.04 L/min. (Max.)

Pressure:
Min. working pressure - 70 bar.
Max. working pressure - 700 bar
Max. valve case pressure - 35 bar.



CAUTION: To prevent sudden, uncontrolled descent of a load as it is being lowered, use a No. 9596 Load Lowering Valve or No. 9720 Counter Balance Valve (see page 154) in conjunction with the directional valve used in your application.

IMPORTANT: Conversion kit 251528 must be used when mounting the 9609 valve on PA17 or PE17 pumps.

IMPORTANT: When ordering any valve for a PE30 or PG30 series pump, 12.7 mm longer mounting screws are required. For valves 9599 and 9605, order four 251078 cap screws. For valve 9609, order four 10855 cap screws.

Hydraulic Valves

Pump Mounted, Solenoid or Air Operated

700 bar, $\frac{3}{8}$ " ports, 19 L/min. max flow rate.

3-way/2-position solenoid valve

Application: *Single-acting cylinders.* **Actuation:** Solenoid operated, 115 volt, 50/60 Hz.

Functions: Cylinder piston advances when solenoid is de-energized and pump is running. When solenoid is energized, oil is directed to reservoir, and piston returns. For "hold" position, pump is stopped with solenoid de-energized.

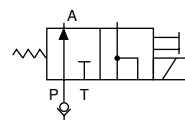
Used on these pumps: PE17, PE21, PE30, PE46, PE55, PE84, PE90, PE120, PE200, PE400, PQ60 and PQ120 series.

No. 9579 – 3-way/2-position solenoid valve, 115 volt, 50/60 Hz. Wt., 4.4 kg.

No. 9569 – Same as 9579, except with 24 volt, 50/60 Hz solenoid.

No. 9570 – Same as 9579 except with 230 volt, 50/60 Hz solenoid.

NOTE: Valves above are shipped without control switch. Use 202777 remote hand switch (see page 162).



NOTE: When this valve is mounted, the pump must be equipped with an outlet check valve.



3/4-way/2-position solenoid valves

Application: *Single- or double-acting cylinders.* **When used with single-acting cylinders, one port should be plugged.** **Actuation:** Solenoid operated.

Functions: Oil is directed to "extend" side of cylinder, oil from "retract" side goes to reservoir; cylinder "holds" with pump shut off. Oil is directed to "retract" side of cylinder; oil from "extend" side goes to reservoir.

NOTE: Cylinder will not "hold" in the "return" position with motor running or shut off.

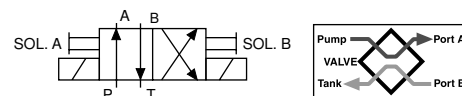
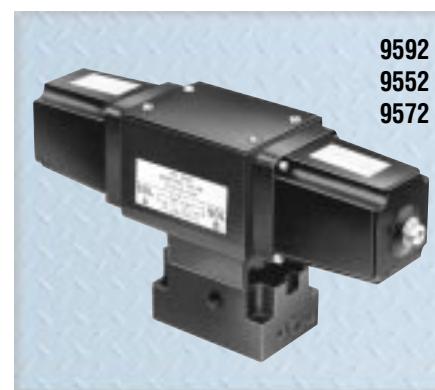
Used on these pumps: 9552, 9572 and 9592 are used with PE17, PE30 (with carrying handles removed), PE46, PE55, PE84, PE90, PE200, PE400, PQ60 and PQ120 series.

No. 9592 – 3/4-way/2-position solenoid valve, 115 volt, 50/60 Hz. Wt., 6.6 kg.

No. 9552 – Same as 9592, except with 230 volt, 50/60 Hz solenoid.

No. 9572 – Same as 9592, except with 24 volt, 50/60 Hz solenoid.

NOTE: Valves above are shipped without controls. The 9552, 9572 and 9592 can be used with the 304718 remote hand control. (see page 162)



Air actuated valve

Application: *Single- or double-acting cylinders.* **When used with single-acting cylinders, one port should be plugged.** **Actuation:** Air operated.

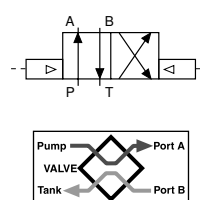
Functions: Oil is directed to "extend" side of cylinder, oil from "retract" side goes to reservoir; cylinder "holds" with pump shut off. Oil is directed to "retract" side of cylinder; oil from "extend" side goes to reservoir.

NOTE: Cylinder will not "hold" in the "return" position with motor running or shut off.

Used on these pumps: PA17, PA46 and PA55 series.

No. 9594 – 3/4-way/2-position solenoid valve, air operated (minimum of 3.5 bar air pressure required). Wt., 5 kg.

NOTE: Valve above is shipped without controls. 9594 can be used with the 209593 remote hand control (see page 162).



NOTE: See page 154 for remote mounted models of this valve.



CAUTION: To prevent sudden, uncontrolled descent of a load as it is being lowered, use a No. 9596 Load Lowering Valve or No. 9720 Counter Balance Valve (see page 154) in conjunction with the directional valve used in your application.

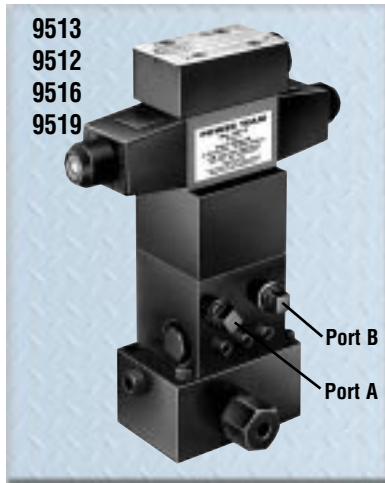
IMPORTANT: Conversion kit 251528 must be used when mounting any of the valves on this page on PA17 or PE17 pumps.

IMPORTANT: When ordering any valve for a PE30 or PG30 series pump, 12.7 mm longer mounting screws are required. For valves 9569, 9570 and 9579, order four 10856 cap screws. For valves 9552, 9572 and 9592, order four 12001 cap screws.

Hydraulic Valves

Pump Mounted

700 bar, 3/8" ports, 19 L/min. max flow rate.



4-way/3-position (tandem center) pilot operated solenoid valve

Application: Double-acting cylinders. **Actuation:** Solenoid operated, 115 volt, 50/60 Hz.

Functions: "Advance", "hold" and "return". The "Posi-Check®" feature holds the load when shifting from the "advance" to the "hold" position.

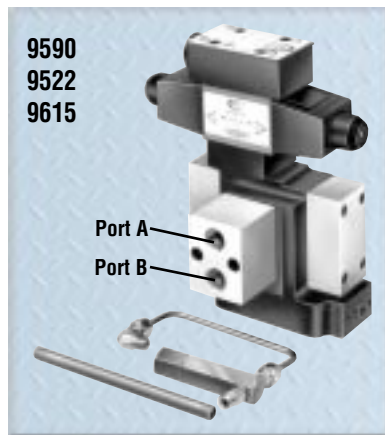
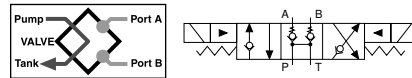
Used on these pumps: PE17, PE21, PE30 (with carrying handles removed), PE46, PE55, PE84, PE90, PE120, PE200, PE400, PQ60 and PQ120 series. **NOTE: A gauge may be attached if desired (see pages 76-77).**

No. 9513 – 4-way/3-position (tandem center) solenoid valve, 115 volt, 50/60 Hz. Wt., 8.2 kg.

No. 9512 – Same as 9513 except for 24 volt, 50/60 Hz circuits.

No. 9516 – Same as 9513 except for 12 volt DC. For use on the PG1204S and PG400 series pumps only.

No. 9519 – Same as 9513 except for 230 volt, 50/60 Hz circuits. Consult factory for field installation



4-way/3-position (open center) solenoid valve

Application: Double-acting cylinders. **Actuation:** Solenoid operated, 115 volt, 50/60 Hz.

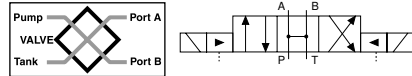
Functions: "Advance", open center and "return" positions. Cylinder ports and pump port are open to reservoir in "neutral".

Used on these pumps: Furnished with pilot lines and adapters for PE30 (with carrying handles removed), PE55, PE90 and PE120 series. For other pump models, consult factory. **NOTE: A pressure switch and/or gauge may be attached if desired (see pages 76-77, 163).**

No. 9590 – 4-way/3-position (open center) solenoid valve, 115 volt, 50/60 Hz. Wt., 7 kg.

No. 9522 – Same as 9590 except for 230 volt, 50/60 Hz.

No. 9615 – Same as 9590 except for 24 volt, 50/60 Hz.



3-way/2-position (pilot operated) solenoid valve

Application: Single-acting cylinders. **Actuation:** Solenoid operated, 115 volt, 50/60 Hz.

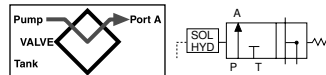
Function: "Advance" and "return".

Used on these pumps: Furnished with pilot lines and adapters for PE30 (with carrying handles removed), PE55, PE90 and PE120 series. For other pump models, consult factory. **NOTE: A pressure switch and/or gauge may be attached if desired (see pages 76-77, 163).**

No. 9589 – 3-way/2-position (pilot operated) solenoid valve, 115 volt, 50/60 Hz. Wt., 3.7 kg.

No. 9523 – Same as 9589 except for 230 volt, 50/60 Hz.

No. 9553 – Same as 9589 except for 24 volt, 50/60 Hz.



NOTE: Valves above are shipped without control switch. Use 202777 remote hand switch (see page 162).

CAUTION: To prevent sudden, uncontrolled descent of a load as it is being lowered, use a No. 9596 Load Lowering Valve or No. 9720 Counter Balance Valve (see page 154) in conjunction with the directional valve used in your application.

IMPORTANT: Conversion kit 251528 must be used when mounting the 9609 valve on PA17 or PE17 pumps.

IMPORTANT: When ordering any valve for a PE30 or PG30 series pump, 12.7 mm longer mounting screws are required. For valves 9513 and 9519, order four 11956 cap screws. For valves 9523, 9553 and 9589, order four 10855 cap screws. For valves 9522, 9590 and 9615, order four 10854 cap screws.

Hydraulic Valves

Pump Mounted

700 bar, 3/8" ports, 19 L/min. max flow rate.

4-way/3-position (tandem center) manual valve

Application: Single strand, single-acting stressing jacks with Power Wedge seater.

Actuation: Lever operated, detent positioned.

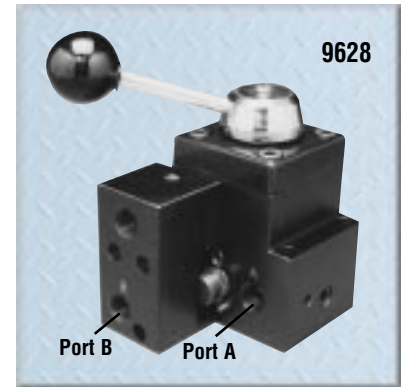
Operation:

1. With valve in center position, pump is started.
2. Cable is inserted into stressing tool, valve is placed in "A" position. "Pull" portion of stressing tool is pressurized to specified level for proper cable tensioning ("A" port is checked internally, can only be released by building pressure in "B" position).
3. Valve is placed in "B" position, which is pressure controlled and will not exceed 440 bar. "Return" portion of stressing tool is pressurized and will release "A" port when pressure reaches approximately one-half the "A" port pressure. "A" port remains open as long as this pressure differential is maintained.
4. Pump is stopped, valve is placed in "A" position, releasing "B" port pressure.

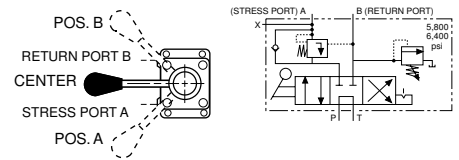
Used on these pumps: PA17*, PA46*, PA55, PE17*, PE21*, PE30, PE46*, PE55, PE60, PE84, PE120, PE200, PE400, PG30*, PG55, PG120, PG400, PQ60 and PQ120 series.

* These pumps may have reduced first flow stage characteristics due to internal valve restrictions.

No. 9628 – Post tensioning valve for 700 bar (max.) single-acting/Power Wedge seater. Wt., 2.5 kg.



Designed for use with Power Team air, gasoline and electric powered hydraulic pumps.



"Twin" 4-way/3-position (tandem center) manual valve

Application: Multistrand, double-acting stressing jacks with an auxiliary seating cylinder.

Actuation: Dual lever operated, detent positioned.

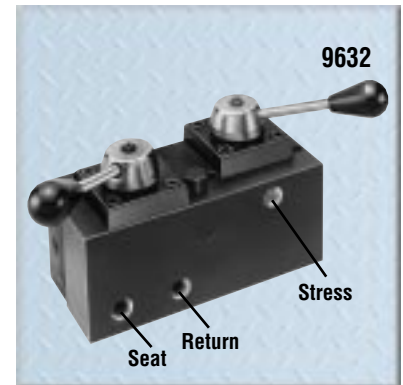
Operation:

1. With valves "A" and "B" in center position, pump is started; cable is inserted into stressing tool.
2. Valve "A" is placed in "Stress" position; cylinder extends to tension cable. Pump pressure controls force exerted by tensioning cylinder in this position. "Stress" port is checked internally, and can only be released by building pressure in the valve "B" return position.
3. When desired cable tension is achieved, valve "A" is placed in valve "B" position and valve "B" in "Seat" position. Seating portion of cylinder will be pressurized to seating pressure controlled by "Seat" relief valve (factory set to 270 bar).
4. Valve "B" is shifted to "Return" position, which is pressure controlled and will not exceed 150 bar. "Return" portion of stressing tool should be pressurized and will release "Stress" port when pressure reaches 15% of "Stress" port pressure.
5. "Stress" port will remain open and cylinder will return as long as pressure differential is maintained. "Stress" and "Seat" ports are open to reservoir.
6. When cylinder has fully returned, both valves are shifted to "Center" position and oil will be directed to reservoir. Maximum pressure setting for the "Seat" relief valve is 415 bar.

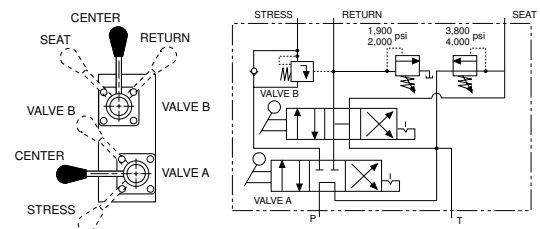
Used on these pumps: PA17*, PA46*, PA55, PE17*, PE21*, PE30, PE46*, PE55, PE84, PE120, PE200, PE400, PG30*, PG55, PG120, PG400, PQ60 and PQ120 series.*

* These pumps may have reduced first flow stage characteristics due to internal valve restrictions.

No. 9632 – Post tensioning valve for 700 bar (max.) double-acting systems. Wt., 6.2 kg.



Pump mounted, 6-position detented 5-way manual dual valve. Rated pressure to valve "A" is 700 bar and valve "B" is 415 bar. Case pressure is 35 bar max.



NOTE: Check the operating pressures of your stressing tool. If different than above, consult tool manufacturer.

CAUTION: To prevent sudden, uncontrolled descent of a load as it is being lowered, use a No. 9596 Load Lowering Valve or No. 9720 Counter Balance Valve (see page 154) in conjunction with the directional valve used in your application.

IMPORTANT: Conversion kit 251528 must be used when mounting any of the valves on this page on PA17 or PE17 pumps.

IMPORTANT: When ordering any valve for a PE30 or PG30 series pump, 12.7 mm longer mounting screws are required. For valve 9628, order four 11956 cap screws. For valve 9632, order four 216234 cap screws.